



A COMMUNITY
REPORT
of SPECTRUM GENERATIONS

*Central Maine Area Agency on Aging
and Disability Resource Center*

Beyond
EXCELLENCE

2022
ANNUAL REPORT

Innovating for Inclusivity: Upgrading Services and Programs to Meet the Needs of Older and Disabled Adults

At Spectrum Generations, we are committed to providing the highest level of care and services to older and disabled adults in our community. We understand that the needs of this population are constantly evolving, and we are dedicated to staying at the forefront of change in order to meet those needs.

Despite the progress we have made in recent years, many older and disabled adults still face significant challenges when it comes to accessing the services and programs to support their unique needs. This can include difficulties with transportation, limited access to technology, and a lack of resources to support them. As we look to the future, it is clear that modernizing our service delivery models and facilities is essential if we hope to continue providing the best possible care to older and disabled adults. We must be willing to embrace new technologies, new approaches, and new ideas staying relevant and effective in this rapidly changing landscape.




With a focus on inclusivity and accessibility, we aim to create solutions that will improve their quality of life and ensure that they are able to participate fully in their communities. We believe that modernizing our service delivery models and facilities is essential to meeting the future and emerging needs of older and disabled adults. We are committed to doing everything in our power to make this happen.

An example of our modernizing effort is the Cohen Center Deck Project that will be a valuable addition to the Cohen Community Center in Hallowell. The goal of this project is to increase the center's capacity to effectively meet the needs of our community while providing a beneficial outdoor environment that will contribute to the overall health and well-being of all users. Besides attracting more lunch diners, the idea of expanding operations and having workshops, evening dinners and events out on the deck is also being considered to meet the variety of needs of our community. The increased hours of operation accompanying the Cohen Center Deck Project, will provide partnership opportunities that were not available previously and will also enable current programming to expand all offerings. We're so excited for the people we serve!

We are fully aware that modernizing our service delivery models and facilities will require significant investment of time, money and resources. We are committed to working with the Board of Directors to develop a plan that allows us to make these investments in a sustainable and responsible way. We are also committed to involving the community in this process and keeping them informed of our progress every step of the way.

Innovating for inclusivity is not only a moral imperative, but it also makes good business sense. By investing in solutions that better serve older and disabled adults, we will improve the lives of this important demographic and create more inclusive communities. I urge you to support these proposed changes and help us move forward in this important effort.


Gerard Queally, President and CEO

That's a Wrap!
... On the 50th Anniversary Year Celebration

A Note from Our Board Chair

CELEBRATING
FIFTY YEARS OF

Dear Friends,

As the President of the Board of Directors for Spectrum Generations, I am pleased to report that we have just concluded our 50th anniversary year as an Area Agency on Aging and Disability Resource Center, serving Central and Mid-Coast Maine. We are proud to have served the older and disabled adults in our community for five decades and look forward to the continuation of these essential programs, for years to come.

In 2022, we celebrated our 50th anniversary through story sharing, highlighting the tremendous growth we have achieved. From our inception as the "Central Senior Citizen's Association" in 1972 through our much needed rebrand and renaming in 2008, when we become "Spectrum Generations" – it is the people we serve – at the heart of all that we do. As a non-profit organization, we offer these life changing services at little to no cost for the community members that need us. With your support and engagement, our organization will thrive into the future!

Over this half century, we have expanded our services to include support for caregivers, adult day programs and professional support for community members that are developmentally or intellectually disabled. Our well-known "Meals on Wheels" program provides much needed nutrition for people that are homebound and face food insecurity. In addition to our multiple connections out into the community, the inclusion of community centers where people can gather to share a meal, participate in a class or enrichment activity and ultimately, feel included amongst friends, is of the utmost importance. Our community centers foster connections for older and disabled adults while we combat the effects of social isolation and meet many needs in one space.



Seth & Jenn of our Nutrition team, celebrate the 50th Anniversary Year



The Farago Family

As we move forward into the future, we remain committed to providing high-quality services, which is why it is of the utmost importance we modernize our facilities and plan for the necessary growth strategies to do so. We know that the need for our services will only continue to grow as the population ages, and we are prepared to meet that need. We want to thank our community partners, volunteers, and donors for their continued support. Without your generosity, we could not provide the essential services that allow all people in our community to age with dignity and independence.

Thank you for your support of Spectrum Generations, we appreciate you and we look forward to the years ahead.

Sincerely,

David Farago, Board Chair
Spectrum Generations



2022 YEAR IN REVIEW

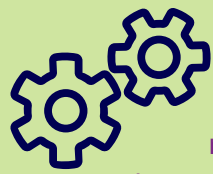
At Spectrum Generations, we work strategically throughout the year to help serve a community where adults with disabilities and older adults are valued, engaged, and living with dignity. It is our honor to do this work and we are pleased to share the following achievements for FY22. (Services delivered between 10/1/21 – 9/30/22)



SPECTRUM GENERATIONS SUPPORTED 10,418 PEOPLE
Our friends, family members and neighbors throughout Central & Midcoast Maine communities and in some cases state-wide.

HEALTHY LIVING FOR ME

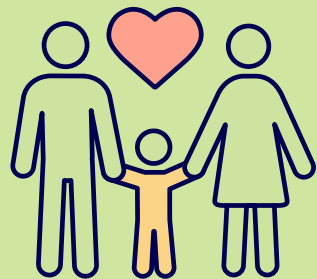
(HL4ME) offered **163** workshops which included **87** in-person and **53** remote in addition to mailed-home "toolkits." Throughout the year, a total of **1,233** people participated in classes.



1,849 people attended social dining at our **COHEN COMMUNITY CENTER** (Hallowell) and **MUSKIE COMMUNITY CENTER** (Waterville) and **26,231** meals were prepared and served.



An impressive **313,577 MEALS ON WHEELS** meals were prepared and delivered to **2,170** people. These nutritious meals, expertly created by our chefs are delivered throughout our service area by incredible teams of generous, committed volunteers.



We provided **288** people and their families with **CAREGIVER SUPPORT SERVICES** such as respite, education, training and counseling. Our Spectrum Generations staff are trained and keenly aware of the importance of educating caregivers in what can be a difficult role in addition to the importance of self-care. **5,337** people utilized our access services which includes case management, information and assistance, outreach, and public education.

Through our certified, Personal Support Service providers, **BRIDGES HOME SERVICES** provided **129,176** hours of invaluable in-home supports including, but not limited to: daily tasks, gentle guidance, transportation, bed-bound patient care and overnight care. **ADULT DAY & COMMUNITY SUPPORT SERVICES** provided **48,457** hours of support to adults with memory diagnosis or intellectually and/or developmentally disabled adults through our programs located at our community centers.



*Our volunteers Carol, Dick, John, Meg, and Wil, arrive well before 7 a.m. to pack over fifty coolers, twice a week. This dynamic team fills bags with milk, juice, fresh fruit, and healthy snacks in under two hours! This amazing volunteer team has worked together for over two years making cooler packing an enjoyable, sociable, and efficient activity. What is even more incredible is **these five volunteers have been volunteering at the Cohen Community Center for over 50 years of combined service and dedication to our Meals on Wheels consumers!***

Volunteer & Community Stories



During the fall a great crew from **Central Church** in Augusta cleaned, weeded, and beautified the **Cohen Community Center** as part of their Serve Central weekend!



Marion Kelley, a long-time consumer at the Muskie Community Center, wanted to do something good for her community. She put her sewing and quilting expertise to the test and created four beautiful quilts to be raffled. What a wonderful gift!



Meet Phyllis, age 95, and her daughter Peggy. Prior to the COVID-19 pandemic she attended congregating dining daily at our Cohen Community Center. She started coming when the center first opened in the '90s! We are so thrilled that Phyllis returned to congregating dining in 2022 to share a meal with her friends and family. Welcome back and thank you for spending so many of your meals with us!

Students from Erskine Academy's Leo Club, a youth organization associated with the Lions Club International, collected pet food throughout the month of February 2022 to support our AniMeals program. Leo Club encourages youths to develop leadership qualities by participating in social service activities. The effort collected over 179 pounds of cat and dog food! Spectrum Generations' AniMeals program began over a decade ago when we learned that some Meals-on-Wheels recipients do not have enough money to feed their pets and were sharing their home delivered meals with their companion animals.



Volunteer Receives Legislative Sentiment; MOW Driver in Somerset County



Senator Brad Farrin and Representative Amanda Collamore surprised Meals on Wheels (MOW) driver, John Slowe, before he headed out on his weekly route. John has served the Skowhegan area for over 21 years delivering MOW to homebound residents. On Thursday, July 7, 2022, John thought he was arriving at the Somerset Community Center to prepare for a typical Thursday morning route but instead, was greeted with a legislative sentiment presentation in honor of his many years of service. We appreciate you, John!

From left to right, Senator Brad Farrin; Randie Getchell, former Nutrition Coordinator for Somerset Community Center; John Slowe, MOWs volunteer; Gerard Queally, Spectrum Generations President and CEO; and Representative Amanda Collamore.



LOOKING TOWARD the Future

Message from the Treasurer

Looking toward the future, we recognize the importance of modernizing our financial strategies and methodologies to meet the evolving and growing needs of older and disabled adults. As stewards of a \$13.8M budget, innovation is key.

One of the major initiatives we have undertaken in FY22 is the integration of Power BI (a unified, scalable platform for self-service and enterprise business intelligence that connects DATA, visuals and applications) with our accounting software system, Great Plains. This powerful technology enables us to access and analyze financial data in real time, allowing for more informed decision making and more accurate reporting. These outcomes enhance the services we provide, as we fulfill our mission.

We have also fostered a strong culture of interdepartmental collaboration, which has been instrumental in our ability to develop and implement effective financial processes and a robust fiscal analysis system. This facilitates alignment of our resources with our agency's strategic objectives and prioritizes investments that will support the growth and expansion of services into the future.

As we move forward, we are confident that our healthy financial position will enable us to continue delivering high quality services for our consumers and plan for the future with confidence. We remain committed to exploring new and innovative financial approaches to maximize our resources.

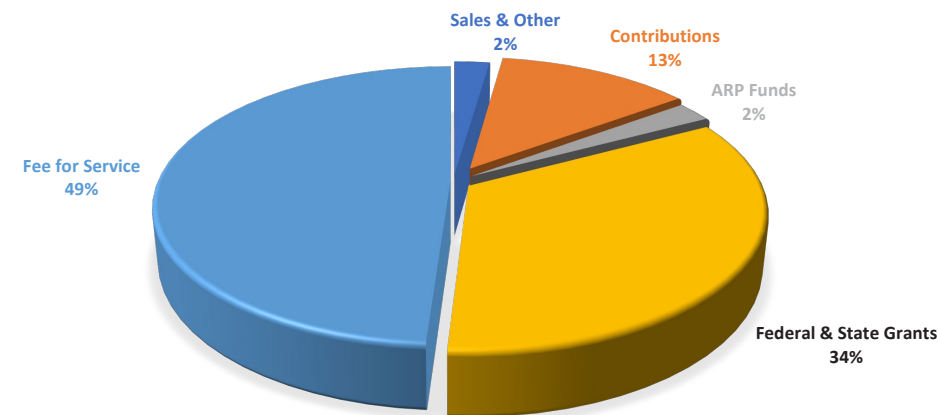
Sharon Cleveland

Sharon L. Cleveland
Chief Financial Officer and Board Treasurer

PICTURED ABOVE: The Kennebec Valley Board of Realtors held their 23rd Annual Charity Golf Tournament on September 14, 2022. As a result, over \$13,000 was raised for Waterville Area Habitat for Humanity, Western Maine Community Action Inc, and Bridges Home Services of Spectrum Generations. We appreciate the Kennebec Valley Board of Realtors, and all those that sponsored the tournament!

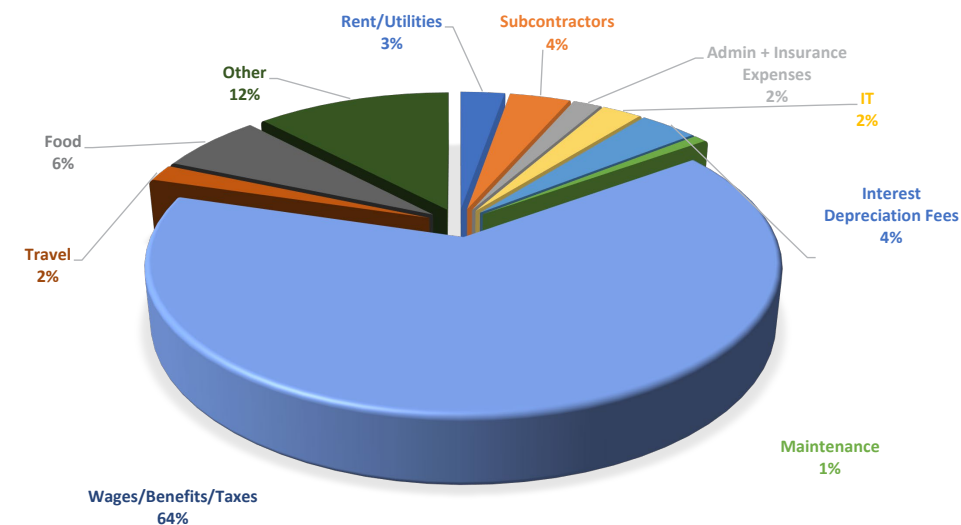
Fiscal Year 2022 FUNDING SOURCES

Fee for Service	\$6,774,961
Federal & State Grants	\$4,686,564
ARP Funds	\$321,446
Contributions	\$1,750,925
Sales and Other	\$315,953
Total	\$13,849,849



Fiscal Year 2022 EXPENSES

Wages, Taxes, Benefits	\$8,802,185
Rent/Utilities	\$372,567
Subcontractors	\$512,252
Admin and Insurance	\$236,325
IT	\$335,999
Depreciation/Interest/Fees	\$493,574
Maintenance	\$110,187
Travel	\$249,504
Food	\$883,885
Other	\$1,643,864
Total	\$13,640,342



OUR BOARD OF DIRECTORS

FY 2022 – 2023

OFFICERS

David Farago – Board Chair
Karen Foxwell – Vice Chair
Stephanie Duncan – Secretary

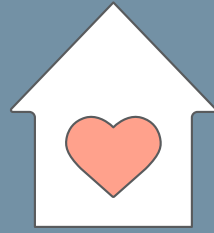
MEMBERS

Peter Bedard
Annette Beyea, MD
Dan Booth
Robert Bremm
Anne Connors
Dean Jackman
Andrea Lenhart
John Morris
Diane Morrison
Nicole Poulin
Josée Shelley
Nancy Weingarten



CORPORATE GIFTS & COMMUNITY PARTICIPATION FOR

IMPACT + GROWTH



United Way

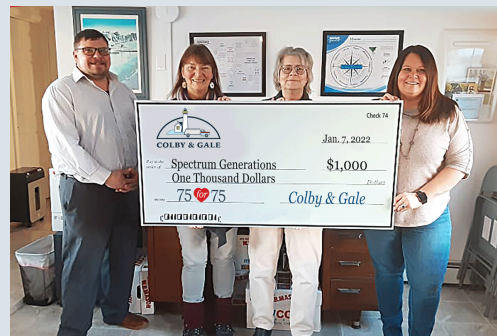
United Way seeks to improve lives by mobilizing the caring power of communities around the world to advance the common good. United Way brings people together to build strong, equitable communities where everyone can thrive. Spectrum Generations is fortunate to be the recipient of United Way funding from three United Way agencies located throughout our service area – these are: United Way of Kennebec Valley, United Way of Mid Coast Maine and Heart of Maine United Way. United Way, as critical partners, support the nutritional needs of homebound older adults and adults with disabilities in Central and Midcoast Maine.



Spectrum Generations employees join with United Way of Kennebec Valley for a campaign event at Central Maine Power Company (Augusta).



Ampion Renewable Energy and The Red Barn partnered to bring Community Solar to Augusta area residents in 2022. For each new community solar subscriber who enrolled through The Red Barn, Ampion made a \$100 donation to Spectrum Generations' Meals on Wheels program raising \$3,000 to purchase the raw food needed to produce and deliver over 2,400 meals to our community!



In celebration of Colby & Gale's 75th year serving their community, Spectrum Generations received a \$1,000 donation. The "75 for 75" Community Giving Campaign saw a total of \$75,000 (75 donations of \$1,000 each) reflecting the number of years they've been in business, to local nonprofits, as selected by their employees.



Each year we are fortunate to have New Dimension's Federal Credit Union support our Meals on Wheels program by presenting a check from Maine Credit Unions' Campaign for Ending Hunger. In 2022 Michelle Beaulieu presented Spectrum Generations' Muskie Community Center with a \$1,500 check.



Thank you, Summit Natural Gas of Maine, for your generous donation!

"Each year, through the Summit Natural Gas of Maine Community Giving Program we award funding to organizations with strategies aligned with our interests," said Ryan Moody. "This year we focused our charitable grant-giving towards organizations that combat food insecurity and promote child well-being within our service areas. At Summit, we understand we are only as strong as the communities we serve, which is why we were excited to support Spectrum Generations."

COMMUNITY CHAMPION

With Most Gracious Thanks to Allan W. Pottle, Sr.
Our Community Champion...



In FY22, our friend, Mr. Allan Pottle made a generous gift – over \$400,000 – toward capital improvements for the Muskie Community Center of Waterville. Through conversations with Mr. Pottle, we have learned that he wants to give back to his fellow seniors living in the area and that he has been a part of the Muskie Community Center for over fifteen years where he regularly enjoys congregate dining – not just the food, but the socialization as well. *Although Chef Gary's turkey dinner is his favorite; the COVID-19 Pandemic has deepened his affection toward the importance of socialization and the great impact that congregate dining has on its community members.* Simply put, Mr. Pottle shares, "I care. All it takes is offering a hand in order to help."

- EVENTS -

Each year Spectrum Generations engages with community members, corporate partners, sponsors, donors and media professionals to host four unique fundraising events. Events are critically important to the work of our agency in raising awareness concerning needs of the people we serve, raising funds to support our programs and offering activities that are enjoyable and engaging for our community members. Events include:

MIDCOAST TREE FESTIVAL | Brimming with gifts worth more than \$500 each, beautiful Christmas trees are donated by the businesses and organizations in vibrant Midcoast Maine. Then, these incredible trees are raffled off to the public, who buy tickets for chances to win. Proceeds from the festival also support St. John's Parish and the Bath-Brunswick Regional Chamber - organizations which use the raised funds to help the community in diverse ways. The Midcoast Tree festival takes place each November.

THE GENE AND LUCILLE LETOURNEAU ICE FISHING DERBY | This mid-winter tradition for ice fishing enthusiasts and families was established 25 years ago by volunteers and named for Maine's great outdoorsman and his wife, Gene and Lucille Letourneau longtime volunteers and supporters of our Meals on Wheels program. The ice fishing derby attracts people throughout the state to fish and compete for cash prizes each February. The event includes door prize drawings, 50/50 raffle, silent auction, fire pit with S'mores making, youth activities and more!

GOLF FORE A CAUSE | Our signature 18-hole golf outing takes place each year in the summer and welcomes golfers and golf enthusiasts of all levels. The event includes contests such as the popular golf air canon and raises donations that support our programs and services.

CELEBRITY CHEF CHALLENGE | The event features three local chefs who go head-to-head preparing signature dishes based on Meals on Wheels guidelines and standards for nutrition. The dishes are enjoyed and voted on by attendees and reviewed by a panel of judges. The winning dish is then incorporated into Spectrum Generations' Meals on Wheels program. Attending guests also enjoy a reception with appetizers, entertainment, and a silent auction.



2022 DONORS

LEGACY MEMBERS \$10,000+

Allan W. Pottle, Sr.
Estate of Michael A. Laskey
Heart of Maine United Way
Poor Family Trust
Spinaker Trust
United Way of
Kennebec Valley
United Way of
Midcoast Maine

ADVOCATES \$5,000 - \$9,999

Alfond Youth &
Community Center
Charles Gaunce
Maine Community
Foundation

LEADERS \$1,000 - \$4,999

Andrew Ferran
Ann Slocum Charitable
Fund
Barbara Atkins
Barbara Logan
Caroline M Karnes
Central Maine Power
Company - Augusta*
Colby and Gale, Inc
Connected Credit Union
David J. Farago
Dead River Company
Diana McKenzie
Doug Sukeforth
Ernest Edgerley
Hammond Lumber Co.
Healey & Associates, Inc.
James Nichols
John Blamey
John Thompson
Karen Foxwell
Kennebec Valley Federal
Credit Union
Kristen Bifulco
Kristie E. Dodge
Maine Credit Unions'
Campaign for Ending
Hunger
Mid-Coast Energy Systems
Michele Pelletier
Monmouth Masonic
Lodge 110
Nale Law Office, LLC
Penbay Estate Planning
Law Center
Robert Young
Roger Schutte
Sappi North America
Summit Natural Gas of
Maine
The Harold Alfond
Foundation
The Lincoln Home
The Red Barn

UnitedHealthcare
Vital I/O
Waterville Masonic Lodge
No. 33 - F & AM

SUSTAINERS \$500 - \$999

Accurate Building Systems
Anna Edgerley
Augusta Natural Gas
Barbara Atkins
Capitol Insights
Carroll Harper & Associates
Charlie's Motor Mall
Chase Toys, Inc.
Choice Wealth Advisors
Corey Dyke
Dana Lawrence Tree Service
Daniel J. Booth
Dave Libby*
Debbie Dodge
Fiore Olive Oil*
G&E Roofing Company
Gerard Queally
Goggins IGA
Hannaford
Healey & Associates, Inc.
Herbert Everett
Ironman Foundation, Inc.
J.S. McCarthy Printers*
Jason Hann-Deschaine
John Dalton
John Margolis
Johnny Swan
Jonathan Provisor
Josée L. Shelley
Joseph Jones
Karen Wiswell
Katherine C. Tibbetts
Kelsey Mills
Kramer's*
Kyocera Document
Solutions Maine, LLC
Labun's Flooring
Lawrence Duquette
Mainely Handrails*
MaineGeneral Health
New Balance
People Plus
Pinnacle Tree, LLC
Royale Construction, Inc
Sandra Macdonald
Sandra Saucier
Sappi North America
Sidney Farr
Steve's Snacks*
Suzanne Joyce
The Hunter Family Trust
Thomas A. Daggett
Tom Welsh*
True North Hearing
Waterville Elks Lodge 905
Wild Oats Bakery*
William A. Lindie
Winthrop Area Federal
Credit Union

SUPPORTERS \$0 - \$499

AAA*
Albert S. Hall School
Alberta Fish
Albison's Printing, Inc.
Alex Sydnor
Alice Webber
Alison Mizner
Alfond Youth &
Community Center*
Allen Cote
Alzheimer's Care Center -
MaineGeneral
Amanda Cooley
Amazon Smile Foundation
American Glass Company
Amy Vitanza
Andrew Dunbar
Angela S. MacDonald
Anita Zidow
Anna Broome
Anna Edgerley
Anne Conners
Anne E Carter
Anne M. Putnam
Anne M. Turlo
Annee Tara
Annette Roy
Anonymous
Anthem Blue Cross
Anthony Mastromarino
Arlene Elliott
Arline Achey
Arnold G. Thibodeau
Aroma Joe's*
Asian Noodle Bowl*
Aubuchon Hardware*
Avangrid, Inc.
Bangor Savings Bank
Bar Harbor Whale
Watch Co.*
Barbara Delvecchio
Barbara Richards
Barbara Zaccadelli
Bart Stevens
Bath Savings
Be Smart
Beatrice Roy
Belfast Fiber Arts*
Besties Hand Crafted*
Bethany Struck
Betty Snyder
Beula Green
Bill Moore
Bob Dennis*
Bob Herzing
Bobbi Macdonald
Bracy Memorial Trust Fund
Bread of Life Ministries
Brian Skehan
Brian Watson
Bridges Home Services
Bristol Area Lions Club
C.O. Beck & Sons
C.P.L. Farm & Trucking

Cabelas*
Cakes by Karen*
Caitlyn Ware
Candice Clements
Capitol Western Chapter,
MSEA/SEIU Local 1989
Carl Swanson
Carla Dickstein
Carol J. Leighton
Carol Jean Forrest
Cassandra Thompson
Celeste Perkins
Champions Fitness School*
Chaplaincy Institute
of Maine
Charles Bassett
Charles Pasquerillo
Charles Raymond
Cheney Insurance
Cheryl Dubois
Christopher O. Caffrey
Cindy Blodgett
Claire Jackson
Clare Alden
Claudine Chaput
Clifford A. MacKay
Clifton Johnson
Cobbossee Bait*
Colby Moon
Comfort Keepers
Constance Chase-Wells
Consumers Fuel Company
Core Cutter, LLC
Curt Bigelow
Cushnoc Senior Citizens
Club
Cynthia Wurlpel
Damon's Beverage*
Dan Bickford*
Dan Brown Enterprises
Daniel Doiron
Daniel Petersen, Esq.
Daniel Strauss
Dardi Roy
Dave Cote*
David Crockett
David Crofoot
David Ettinger
David May
David McDermott
David R. King
David Rundlett
Dawn Colburn
David Cornforth
Day's Jewelers*
Dean Parent
Deb Cates
Debra Campbell
Debra Szarka
Delbert Matheson
Dennis Stedford
Denny Ziegler
Diane M. Orcutt
Diane Morrison
Diane Vatne
Dianne Smith
Dolly Ann Libby
Dominique B. Douin
Donald Marchildon
Donald Russell
Donna Drake

Donna Michaud
Donna Ptak
Dorothy Lee
Douglas Hassen
Dunkin Donuts*
Dustin James Carter
E. J. Prescott, Inc.
Edgcomb Community
Church
Edna Marshall
Eleanor Brown
Elijah Kellogg Church
Elise Klysa*
Elizabeth J. Poulin
Elizabeth M. Grada
Ellen Rhinehart
Elyse Oosterman
EM Wood Construction
Emma Stephenson
Enchanted Stores*
Erskine Academy*
Escape Room Brunswick*
Evelyn E. Gaboury
Fish Tails Pet Emporium*
Food Addicts in Recovery
Anonymous - The Maine
Chapter
Francis Arsenault
Front & Maine*
Funtown/Splashtown*
Gail Smith
Gary Burns
Gary Goodrich
Gary Hubley
Gary Winchenbach
George Eastman Jr.
George Laday
George Maxim
George McGregor
George R. Sawtelle
Geraldine Roley
GFWC Semper Fidelis Club
Gladys Dewick
Gladys M. Schacht
Gladys McGuire
Glenice Skelton
Gordon Gilbert
Granite Hill Estates
Gretchen Merry St. Pierre
Hale Bennett Morris
Hampton Inn*
Harmon Harvey
Harry Hopcroft
Heather Michaud
Heather Williamson
Heavenly Yarns*
Helen B. Holman
Herbert Brock
Herbert Whittier
Hinda Pozner
Hollis M. Bennett
Home Depot*
Home Supply Center*
Houles Plumbing &
Heating*
Ideal Electric Inc.
Inland Fisheries & Wildlife*
Insurance Professionals of
Central Maine
Irene Dearden
Irene Gamache
Isaac Sparks

Jack Everett
Jack's Trading Post
Jacqueline A. Stevens
James Cumming
James David Beaudry
James Marine
Jane Peabody
Janet Babb
Janet Hackett
Janice A. Hamilton
Janice Orff
Janice Pratt
Jay Simanski
Jean P. Andreasen
Jean Swenson
Jeanne Charbonneau
Jeanne L. Codere
Jen Trafton
Jennifer Fortin
Jenny Meyer
Jim Moorhead
Jo Anne Mesplay
Jo Nickerson
Joan Breton
Joan F. Webber
Joan Gilbert
Joan M. Utting
Joan Rodrigue
JoAnn McElvaine
Jodie Hampton
John Allan
John Callinan
John D. Jenne
John E. Morris
John Fisher
John J. Markoe
John Lord, Jr.
John McCormick
John T. Sutton
Johnny Kiefer
Johnny's Selected Seeds*
Johnson Fenwick
Jonathan Schleder
Jorgensen's*
Joseph Arthur Packard, Ph.D.
Joseph Douin
Josephine Smith
Judith Ann Whiting
Judith Bauman
Judith W. Cole
Julie Dupont
Juliette Gilbert
KMD Driving School*
Karen Noyes-Moody*
Karyn Wheeler
Kay Morris*
Keith Field Classical
Goldsmith*
Kennebec Eye Care
Kennebec Internal
Medicine Association, PA
Kenneth Longfellow
Kevin Ouellette
Kimberly J. MacDonald
KMD Florist*
Kristine Arntsen
Lakeside Dental LLC
Lakewood Theater*
Larry MacDonald, Jr.
Larry Wentworth
Last Things Alternatives
at the End of Life

Lauretta Grady
Lee Hapworth
Leon Harkleroad
Leta Howes
Lincoln County FISH
Linda Ault
Linda J. Allen
Linda K. Ball
Linda Rice
Linda S. Saltonstal
Linda V. Haag
Linda Yaffe
Lindsay MacDonald
Linnea K. Johnson
Lionel Howard
Lisa's Legit Burritos
Literacy Volunteers of
Kennebec
Lois Doran
Lorraine Schwanemann
Loyal Biscuit*
Lucille Andrews
Lularoe with Sandy
MacGrillis-Rousseau
V.F.W. Post #8835
MacKenzie Landscaping, Inc.
Madeline Stevens
Magic Falls Rafting*
MAHS Class of 1964
Main Street Music Therapy
Maine Al-Anon
Family Groups
Maine Bureau of Insurance
Maine Cabin Masters*
Maine Eye Doctors
Maine Forest Yurts*
Maine Maritime Museum
Maine Narrow Gauge
Railroad*
Maine Wildlife Park*
Maine State Music Theatre
MaineGeneral Health
Margaret Ayotte
Margaret Smith
Margaritas*
Marguerite Jandreau
Maria Laferriere
Marianne Gillespie
Marie Christensen
Marion Kelley
Marylin Peletier*
Mark Newcombe
Welding, LLC
Margo Knight
Martha Spruce
Mary Anne K. McCrea
Mary Bean
Mary Chase
Mary Colbath
Mary E. Decker
Mary Hatch
Mary Jane Lemont
Mary Katherine Baker
Mary Palange
Mary Sheldon
Maurice G. Ladd
Max Scholz
Mbingo Mountain Coffee*
McKee Billings LLC PA
McKenzie Moore
Melanie Peterson
Meredith Fossel

Michael Cosgrove
Michael J. Begin, Jr.
Michael Johnson
Michael Kay
Michelle Aquino
Midcoast Kayah*
Miller Fitness
Milton Bryant
Moira McCabe
Mona Dutch
Monica Brennan
Monkey C Monkey Do*
Monmouth Lions Club
Morgan Stanley Global
Headquarters
Muriel Blanchette
Nancy Bell
Nancy Best
Nancy Charette
Nancy Sanford
Nate Berkley
Nate Miller*
Nautilus Seafood*
Nexus (Arcade)*
Nicole Hasenafus
Nicole Simon
Norma E. Greenlaw
Norma Lord
North Country Rivers*
Norway Savings Bank
Now You're Cooking*
Oliver Investments
OPA*
Otto's on the River*
Out on a Whimsey Toys*
Pamela Amrein
Pamela L. Taylor
Pamela McDermott
Pande Stevens
Patricia Pelletier
Patricia Poisson
Patricia Stevens
Patrick Brown
Paul Brown
Paul Emerson
Paul Forman
Paul Jacques
Paula Grenier
Penquis Foster
Grandparent Program
Peter Altmann
Peter Cook
Peter Leon Doyon
Peter Smith
Peters Shortier Unit 16
Skowhegan American
Legion Auxiliary
Philip Tiemann, Jr.
Pike Industries, Inc.
Pope Sails & Rigging*
Portland Sea Dogs*
Priscilla Costello
Priscilla J. Laganiere
Rabia Shamim
Rachel D. Dutch
Rare Bird Art*
Raymonde N. Edgaru
Rebecca Genest
Reed Family Insurance
Advisors
Reginald Michaud
Reina Michaud

Reinette G. Dearborn
Retail Therapy*
Rex Riggs
Richard J. Fitzgerald
Richard Morin
Richard Rodrigue
Rita Oellers
Robert Bremm
Robert Koenig
Robert Thomas
Roberta Drummond
Robin J. Morrison
Robin King
Robin Samalus Getchell
Robin Small
Rochelle Roelofs
Rodney Richards Jr.
Roger P. O'Connor
Roger Pomerleau
Roland Rossignol
Rollande Giguere
Rona Backstrom
Rosalie Deschenes
Saco Bay Physical Therapy
Sally Foster
Sally Jean Rollins
Sandlin Preecs
Sandra Arbour
Sandra Bledsoe
Sandra Burgess
Sandra F. Brown
Scales*
Sean Rivers
Selah Tea*
Senior Planning Center
Sharon D. Brown
Sharon L. Cleveland
Sharon Lee
Sheba's Wicked Kitchen*
Shelley's Flowers and Gifts
Shirley Chaffee
Sidney Dupont
Silver Street Tavern*
Skillin's Greenhouse*
Smart Eyecare & Med Spa
Soul Revival Studios*
Sprague & Curtis
Real Estate
Standard Waterproofing Inc.
Stanley T. Browne
Stephen Porter
Stephen Loeb
Steven Bender
Steven Shepard
Stoney Ridge Alpaca Store*
Strictly Roofing, Inc.
Strong-Hancock Funeral
Home
Stuart G. Goode
Stuart S. Reynolds
Sunrise Bagel*
Susan M. Thompson-Cloutier
Susan Parks
Suzanne Baack Dyke
Suzanne Beyea
Suzanne Wilcox
Sylvia Bilodeau
Theresa Murphy
The Axe Pit*
The Chocolate Drop Candy
Shop*

The Coast Children's
Museum*
The Framemakers*
The Good Table*
The Korner Store*
The Meadows Golf Club*
The Miller's Table at
Maine Grains*
The Purple Baboon*
The Towne Motel*
Thomas Bedard
Thomas D. King
Thomas Martin
Tire Warehouse*
Tom Tietenberg
Townsquare Media
Tracey L. Horton
Travis Bean
Trudy Ellis
Trudy Tuttle Hart
Uncle Rob's Tackle*
United Insurance - Tilton
Insurance Agency
Universalist-Unitarian
Church
Valerie Bourgoin
Valerie McNamara
Valerie Wunderlich
Valley Beverage*
Vernon Gettig
Vickie Kenney
Victoria Abbott
Victoria Bedard
Vincent J. Scannell
Vinolio*
Vivian Brochu
Waldo County Oil &
Propane, Inc.
Walmart Vision Center
Walter McCarty
Warren Spaulding
Waterfront Concerts*
Waterville Stamp Club
Waterville Opera House*
Wayne Glen Hardwick
WB Mason*
Wellness for the Ages, LLC
Wendy Jorgensen
Wesley Littlefield
Weston Wotton
Wilbur A. Swett Jr.
Wilfred Boulgier
William Covert
William D. Branch
William Russell
William J. Vaughan, Jr.
William Weatherbie
Woodlands Senior Living
Zach Stewart
Zimba Company, Inc.

*Indicates in-kind donors



This annual report was printed with the support and generosity of J.S. McCarthy Printers in Augusta, ME



Members of Bridges Home Services and the Nutrition team celebrate the 50th Anniversary Year at Spectrum Generations.



1.800.639.1553



spectrumgenerations.org



[spectrumgenerations](https://www.facebook.com/spectrumgenerations)



[@SpectrumGen](https://twitter.com/SpectrumGen)

Proudly serving from these convenient locations:

Cohen Community Center | 22 Town Farm Road, Hallowell | 207.626.7777

Home Office | One Weston Court, Augusta | 800.639.1553

Knox Resource Office | 87 Elm Street, Suite 204A, Camden | 207.596.0339

Lincoln County Regional Center | 767 Main Street, Suite 5, Damariscotta | 207.563.1363

Midcoast Regional Center (co-located at People Plus) | 35 Union Street, Brunswick | 207.729.0475

Muskie Community Center | 38 Gold Street, Waterville | 207.873.4745

Somerset Community Center | 30 Leavitt Street, Skowhegan | 207.474.8552

Waldo Community Center | 18 Merriam Road, Belfast | 207.338.1190